

---

## PRODUCT CERTIFICATION SCHEME FOR MECHANICAL-WATER FIXTURES

### 1. Objective:

This procedure describes the criteria implemented by RACS as Notified Body of Emirates Authority of Standardization and Metrology (ESMA) and Saudi Standards Metrology & Quality organization (SASO) to assure that Mechanical–**Water Fixture Products** intended for certification with ESMA and SASO are complying the relevant mandatory schemes and applicable Standards

Furthermore, this document identifies the steps taken by RACS Clients (Manufacturers, Traders, importers, retailers, Business owners or any other client) to get their products/processes certified prior to its commercializing in the market, and registered by through RACS Quality certificates issuing services as ESMA Notified Body and Certification Body (3<sup>rd</sup> Party CAB) authorized by SASO by issuing certificates of conformity in accordance with Scheme Owner (ESMA/SASO) Regulations:

### 2. Definitions:

- **ESMA:** Emirates Authority for Standardization and Metrology.
- **SASO:** Saudi Standards Metrology & Quality organization
- **RACS:** RACS Quality certificates issuing services
- **Scheme:** Certification system related to specified products, to which the same specified requirements, specific rules and procedures apply.
- **Certification:** Third-party attestation related to products, processes, systems or persons.
- **Notified Body:** a conformity assessment body designated by ESMA to conduct conformity assessment process on products and processes in accordance with related schemes/standards/regulations mandated by ESMA.
- **Certification Body:** a conformity assessment body designated by SASO to conduct conformity assessment process on products and processes in accordance with related schemes/standards/regulations according to SASO.
- **Conformity Certificate:** Formal document issued by RACS as notified body under approval of ESMA and SASO stating that certification is being granted for the product/process in accordance with applicable scheme/standards as per ESMA and SASO Requirements.

### 3. Responsibility:

It is the responsibility of RACS as ESMA Notified Body, and SASO Certification Body (3<sup>rd</sup> party) to establish and maintain the appropriate system to satisfy both ESMA/SASO and clients requirements in accordance to the notification system mandated by ESMA/SASO.

It is the responsibility of ESMA/SASO clients and RACS clients to provide all needed requirements as per ESMA Notification system and SASO Certification Body (3<sup>rd</sup> Party CAB) to ensure their products compliance to the applicable schemes and standards.

### 4. Introduction about RACS Notified Body and 3<sup>rd</sup> Party CAB to provide Certification:

RACS is an accredited certification body & ESMA approved notified Body under its notification system mandated by UAE decree No (35) Of the year 2015 & UAE Cabinet Resolution No (36) and SASO approved Certification Body (3<sup>rd</sup> party CAB) according to the Decree no. 6386 issued by the Trade and Industry Ministry of Saudi Arabia (MOCI), dated the 4th of August 2004, and on Cabinet Resolution No. 216 of 2010, about Approval of the Law of the Saudi Arabian Specifications and Standards Authority.

RACS is an authorized conformity assessment body by ESMA/SASO that it is technically competent to perform the specific tasks of certification to ESMA/SASO clients.

### 5. Service Type:

As per Scheme owner rules, RACS certifies Mechanical - Water Fixtures Products and issues Certificate of conformity under:

- **Product Certification:** Product Certification is an either a Product Certification Scheme being implemented by (ESMA) as mandated by the Federal Law 28 of 2001, or a Product certification is being implemented by (SASO) according to the Decree no. 6386 issued by the Trade and Industry Ministry of Saudi Arabia (MOCI), dated the 4th of August 2004.

Issuance of certificate of conformity by RACS as ESMA's Notified Body and SASO's 3<sup>rd</sup> party CAB assures the compliance of products/production process with the requirements of the approved schemes, standards

Prepared by: Q.O.	Reviewed by: Q.A.M.	Approved by: M.R.
-------------------	---------------------	-------------------

**PRODUCT CERTIFICATION SCHEME FOR MECHANICAL-WATER FIXTURES**

and others specified in the technical regulation by Emirates Authority for Standardization and Metrology (ESMA) and Saudi Standards Metrology & Quality organization (SASO).

**6. Scope of certified products by RACS –ESMA Notified Body and SASO 3<sup>rd</sup> Party Conformity Assessment Body:**

This document cover certifies Mechanical-Water Fixtures products with below details of Sector, scope of certified products, products categories, and applicable type of certification:

Sector (Product Group)	Scope of Certification (Scope of Products)	Product categories	Type of Certification
Mechanical	<b>WATER FIXTURE</b>	Shower taps and shower mixers Taps for public toilets Taps for private toilets Toilets with water tank/stream System (Dual & single Flush) Urinal with stream system Kitchen Faucets Bathing (Washing) Faucets Ablutions Spraying Faucets	<b>Product Certification</b> -Type Approval

**7. Mandatory Schemes and Applicable Standards:**

UAE Green Labeling Scheme for Water Fixtures 43, 2014

SASO Technical Regulation for water consumption.

If needed, Client refers to RACS to identify applicable Scheme and Standards.

RACS Staff to refer to RACS/REC/79 Scope of Certified Products by RACS to identify Certification Applicable schemes and standards

**8. Requirements for Certification:**

Requirements vary depending on the scope of certified products; Details of the documents required for certification for the scope of Mechanical Product as per Scheme Owner (ESMA/SASO) requirements are detailed as following:

**Product Certification:**

**8.1. Documents Required:**

- Application form (Online).
- Valid local Industry/Trade License.
- Test Report from accredited and recognized laboratory
- Fulfill the requirements of the Green Label
- Valid QMS ISO 9001 Certificate of the manufacturing facility
- Product Photos \ Technical drawing or specification datasheet.  
Declaration of Conformity.

**8.2. Legal Agreements:**

- Certification Agreement:
- Non-Disclosure Agreement

**8.3. Fees** as detailed in RACS Schedule of Fees (RACS/REC/46)

Prepared by: Q.O.	Reviewed by: Q.A.M.	Approved by: M.R.
-------------------	---------------------	-------------------

**PRODUCT CERTIFICATION SCHEME FOR MECHANICAL-WATER FIXTURES**

**9. Certification Procedures:**

Based on its role as ESMA Notified body and SASO 3<sup>rd</sup> Party CAB, Procedure will be performed as following:

**9.1. Preparatory Steps:**

- 9.1.1. Application Form shall be submitted by applicant to RACS, submission can be done via RACS affordable communication methods (mail, emails, hard copy, website, E-System)
- 9.1.2. Sales and Marketing Executive/Administrative assistant will review it to check documents availability on a primary basis
- 9.1.3. A quotation will be sent to applicant by Head of Sales and Marketing; containing the scope of certification and fees related to each step of the certification process.
- 9.1.4. Payment shall be done by applicant.

**9.2. Application Review**

- 9.2.1. Upon acceptance of quotation by client, he is requested to sign the General Conditions for Certification Services.
- 9.2.2. Application along with related supportive documents will be received by RACS Conformity Manager who shall assign one of RACS technical team members (Conformity Officer- (Evaluator or Auditor)).

**9.3. Application Evaluation**

- 9.3.1. Conformity Officer (Evaluator or Auditor) shall perform conformity assessment (Evaluation) steps related to the certification scheme (Product Certification or Full Quality Assurance):

**Product Certification**

- Detailed documents review for all the documents
- Document review includes the check up for Test Reports parameters and results, done by 3<sup>rd</sup> party Laboratory according to the specific technical regulations and applicable standards.
- Evaluation of product the eligibility of the Product for certification to assure compliance according to applicable schemes and standards

Note: No of Samples to be selected for testing is defined by the specific technical requirements and as per scheme owner

- 9.3.2. Evaluation Outcome results:
  - If evaluation is pending for missing or invalid documents or other needed information to complete evaluation; Additional Supportive Documents will be requested by Applicant.
  - Evaluation includes Product Safety Verification through test reports provided on all safety Test parameters requested by applicable scheme/standards, test reports shall be issued by 3<sup>rd</sup> party accredited Laboratory sub-contracted according to the approved Standards and applicable technical requirements.
  - If test reports are not complying with Standards; Conformity Officer/Assessor requests rectification of the non-complying aspects, then based on applicant confirmation of rectification, Collection of samples will be done to conduct the same laboratory tests again and for once.
  - Evaluation will be repeated upon applicant re-submission of needed documents/information.

**9.4. Decision of Certification:** Upon submission of this information, and as per the result of documents review and completing product evaluation process,

**9.4.1. Recommendation of approval of Product certification:** Product evaluation shows full compliance with applicable schemes/standards:

- Application is initially approved by Conformity Officer/Assessor
- Recommendation for certification approval will be made by Conformity Manager
- Certification decision will be done by Decision Committee
- Granting the issuance of Certificate of conformity, recognized by scheme owner (ESMA/ SASO)
- Certified Products will be listed in RACS Certified Products registry.

**9.4.2. Recommendation of rejection of Product certification:** Product evaluation shows non-compliance with applicable schemes/standards, due to any reason preventing product from Certification:

- Application is declined by Conformity Officer/Assessor
- Recommendation for certification rejection will be made by Conformity Manager
- Rejection decision will be done by Decision Committee
- RACS will inform client by an Official rejection statement (Letter of certification Status) by e-mail stating the reason of rejection.

Prepared by: Q.O.	Reviewed by: Q.A.M.	Approved by: M.R.
-------------------	---------------------	-------------------

**PRODUCT CERTIFICATION SCHEME FOR MECHANICAL-WATER FIXTURES**

Please refer to Available on RACS Website→Public available information→ RACS Notified Body/Certification Body→Required Docs→

- **WFX/REC/01:** Legal & Quality Documents-List of certification requirements per applicable Scheme – Water Fixtures.
- **WFX/REC/02:** Application Form-Water Fixture Products
- **WFX/REC/03:** Product Certificate Template-Water Fixtures
- **RACS/Ag/01:** Certification Agreement/ RACS Quality- Client
- **RACS/Ag/03:** NDA/RACS Quality - Client/Subcontractor
- **RACS/Ag/10:** General Conditions for Certification Services

**Notes for clients:**

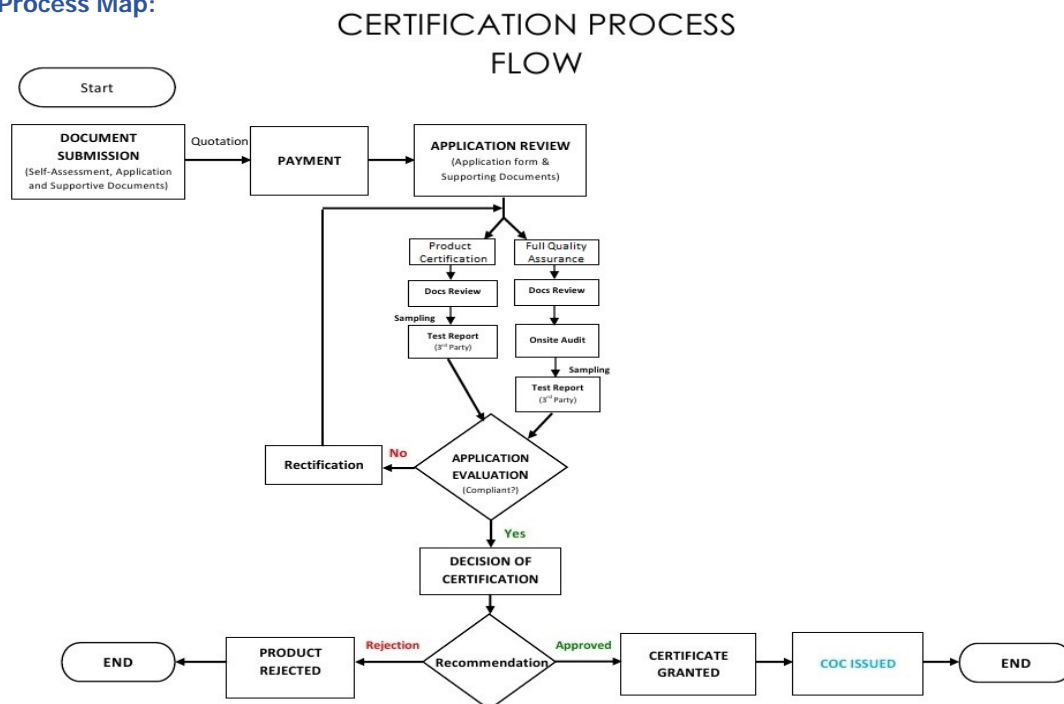
- For some scopes where it is required to have a quality system available, clients seeking to be certified for any of their (Products or services or facility/Process) to Schemes and applicable standards through RACS are requested to implement relevant Quality System including documentation in a way to meet all requirements of this standard and all relevant specific standards depending on the nature of service (certified Product& Process).
- In case of a Client newly operating, and seeking to be certified, Client is required to demonstrate more than 3 months compliance against the standard immediately preceding the date of the Pre-Assessment performed by RACS. This will prove the efficacy and sustainability of the implemented system. After which RACS will be contacted to plan for required audits and Certification.
- Client seeking extension or renewal of Certification scope shall as well submit the self- assessment checklist specifying the extension or renewal of the Certification scope.
- Whenever applicable, Additional Certification requirements per Certification schemes: Legal & Quality documents (such as Client Quality Manual) and supportive documents (records and checklists used by applicant), are to be attached to the Self-Assessment Checklist requirements and submitted along with the application as well.

**10. Renewal:**

**Product Certification**

- Validity of certificate is one year,
- COC should be renewed 2 months prior expiry.

**11. Process Map:**



Prepared by: Q.O.	Reviewed by: Q.A.M.	Approved by: M.R.
-------------------	---------------------	-------------------

**PRODUCT CERTIFICATION SCHEME FOR MECHANICAL-WATER FIXTURES**

**12. Market Monitoring:**

RACS Will be conducting Market Surveillance campaigns in the local markets to assure continuous compliance of certified products and inform Scheme owner on immediate basis on the non-conformity products to take the appropriate action.

**13. Related Forms:**

Listed Agreements, SOPs, Records related to the **SOP54** as follows:

**General Forms:**

TITLE OF DOCUMENT	IDENTIFICATION
Quality Master List	RACS/REC/01
Certification Agreement/ RACS Quality- Client	RACS/AG/01
NDA/RACS Quality - Client/Subcontractor	RACS/AG/03
Scope of Certified Products	RACS/REC/79
Schedule of Fees	RACS/REC/46

**Specific Records related to the Scope:**

<b>WFX/REC/01</b>	Legal & Quality Documents-List of certification requirements per applicable Scheme –Water Fixtures
<b>WFX/REC/02</b>	Application Form-Water Fixture Products
<b>WFX/REC/03</b>	Product Certificate Template-Water Fixtures
<b>WFX/REC/04</b>	DIN EN 817, DIN EN 200, DIN EN 248 - Ablution Spray
<b>WFX/REC/05</b>	DIN EN817, DIN EN 200, DIN 248, DIN EN 1717- Kitchen Mixer
<b>WFX/REC/06</b>	DIN EN 817, DIN EN 22, DIN E 1717, DIN EN 1111, DIN EN 1112, DIN EN 1113, 248 - Head Shower
<b>WFX/REC/07</b>	DIN EN817, DIN EN 200, DIN EN 248 - Bidet Mixer
<b>WFX/REC/08</b>	DIN EN 817, DIN EN 200, DIN EN 248 - Basin Mixer (Public)
<b>WFX/REC/09</b>	NSF 61 - Drinking Water System Components
<b>WFX/REC/10</b>	ASME A112.18.1 / CSA B125.1 Fixture Materials - Duplicate One
<b>WFX/REC/11</b>	ASME A112.19.2 M - General - Duplicate One
<b>WFX/REC/12</b>	ASME A112.19.2 M - General
<b>WFX/REC/13</b>	"ANSI Z124.2, ASME
<b>WFX/REC/14</b>	A112.19.9 M or CSA B45.5 - Fixture Materials "
<b>WFX/REC/15</b>	ASME A112.19.9.2 M General
<b>WFX/REC/16</b>	ASME A112.19.9 M or CSA B45.1 - Fixture Materials
<b>WFX/REC/17</b>	NNSF 61 - Drinking Water Systems Components
<b>WFX/REC/18</b>	ASME A112.18.1 / CSA B125.1 Fixture Materials
<b>WFX/REC/19</b>	ASME A112.19.6, CSA B45.1 Or CSA B45.5 - Hydraulic Performance

Prepared by: Q.O.	Reviewed by: Q.A.M.	Approved by: M.R.
-------------------	---------------------	-------------------

**PRODUCT CERTIFICATION SCHEME FOR MECHANICAL-WATER FIXTURES**

<b>WFX/REC/20</b>	ANSI Z124.9, ASME A112.19.2M, ASME A112.19.19, CSA B45.1 Or CSA B45.5
<b>WFX/REC/21</b>	ASME A112.1939M, CSA B54.1, CSA B45.4 Or SCA 45.5 General"
<b>WFX/REC/22</b>	ASME A112.19.13 Electro Hydraulic Water Closets
<b>WFX/REC/23</b>	"ANSI Z124.4 ASME A112.19.2
<b>WFX/REC/24</b>	ASME A112.1939M,
<b>WFX/REC/25</b>	CSA B45.1
<b>WFX/REC/26</b>	CSA B45.4, CSA B45.5 Water Closet Tanks"
<b>WFX/REC/27</b>	ASME A112.19.6 Hydraulic Performance of water closets
<b>WFX/REC/28</b>	ASME A112.19.2M ANSI Z124,4, ASME A112 19.2M CSA B45.1, CSA B45.4 Or CSA B45.5 - General Water Closers

**14. References:**

- ISO/IEC 17065, Conformity Assessment - Requirements for bodies certifying Products, Processes and services.
- ISO/IEC 17021, Conformity Assessment — Requirements for bodies Providing audit and Certification of management systems.
- ISO 9001:2015 Quality Management Systems
- GAC Document: FAD- 4.0: Supplementary accreditation requirements for Product Certification Bodies.
- R307: General Requirements Accreditation of ISO /IEC 17065 Product Certification Bodies
- IAF Mandatory Document: Determination of Audit Time of Quality and Environmental Management System.
- ISO/IEC 17000, Conformity Assessment — Vocabulary and general principles.
- ISO/IEC 17020, Conformity Assessment— Requirements for the operation of various types of bodies performing inspection.
- ISO/IEC 17025, General requirements for the competence of testing and calibration laboratories.
- ISO17067, in combination with ISO Guide 28 and ISO Guide 53
- ISO/IEC 17030, Conformity Assessment — General requirements for third-party marks of conformity.
- ISO Guide 23:1982 Methods of indicating conformity with Standards for third-Party certification Systems
- ISO Guide 27:1983 Guidelines for corrective action to be taken by a certification body in the event of misuse of its mark of conformity
- General Requirements for Notified Bodies issued by Emirates Authority for Standardization and Metrology (ESMA).
- RACS Quality Manual RACS/QM/01
- All controlled QMS records-Please refer to RACS/REC/01-Quality Master List.

<b>Prepared by: Q.O.</b>	<b>Reviewed by: Q.A.M.</b>	<b>Approved by: M.R.</b>
--------------------------	----------------------------	--------------------------